



Anapol Schwartz | Attorneys at Law

# BREAST CANCER

## A STATE BY STATE RESOURCE GUIDE

ORGANIZED BY THE LAWYERS AT ANAPOL SCHWARTZ. © 2008 ALL RIGHTS RESERVED.

CONTACT LAWYERS: [ALAN SCHWARTZ](#), [HOWARD LEVIN](#) & [STEVE POKINIEWSKI](#)

CALL: (215) 735-0364

READ MORE INFORMATION ONLINE AT: [www.anapolschwartz.com](http://www.anapolschwartz.com)

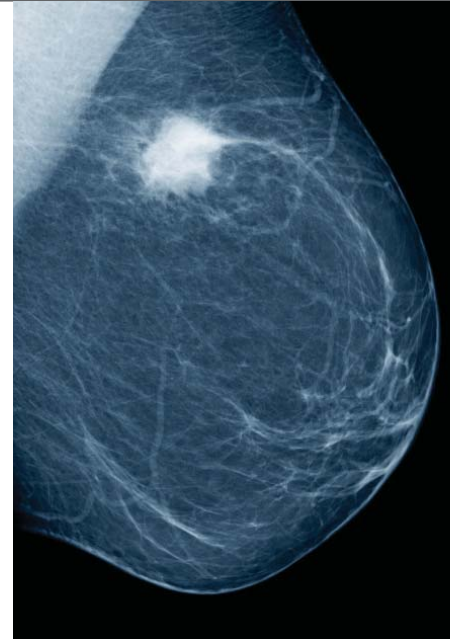
DISCLAIMER: This information is not intended to replace the advice of a doctor. Please use this information to help in your conversation with your doctor. This is general background information and should not be followed as medical advice. Please consult your doctor regarding all medical questions and for all medical treatment.





*The following resources may be useful to you in learning more about breast cancer treatment, research, and support that is available in your state.*

The following resources may be useful to you in learning more about breast cancer treatment, research, and support that is available in your state. The majority of breast cancer survivors are those who detected it early. Therefore, it is important to know the early symptoms of breast cancer. Breast cancer is a serious medical condition, where early diagnosis and intervention can make the difference between survival and death. When this disease reaches late stages, it can be difficult to treat. Early detection greatly increases survival and permanent remission rates.



## BREAST CANCER GROUPS BY STATE

- |                                    |                                      |                                       |                                       |
|------------------------------------|--------------------------------------|---------------------------------------|---------------------------------------|
| <a href="#"><u>Alabama</u></a>     | <a href="#"><u>Indiana</u></a>       | <a href="#"><u>Nebraska</u></a>       | <a href="#"><u>South Carolina</u></a> |
| <a href="#"><u>Alaska</u></a>      | <a href="#"><u>Iowa</u></a>          | <a href="#"><u>Nevada</u></a>         | <a href="#"><u>South Dakota</u></a>   |
| <a href="#"><u>Arizona</u></a>     | <a href="#"><u>Kansas</u></a>        | <a href="#"><u>New Hampshire</u></a>  | <a href="#"><u>Tennessee</u></a>      |
| <a href="#"><u>Arkansas</u></a>    | <a href="#"><u>Kentucky</u></a>      | <a href="#"><u>New Jersey</u></a>     | <a href="#"><u>Texas</u></a>          |
| <a href="#"><u>California</u></a>  | <a href="#"><u>Louisiana</u></a>     | <a href="#"><u>New Mexico</u></a>     | <a href="#"><u>Utah</u></a>           |
| <a href="#"><u>Colorado</u></a>    | <a href="#"><u>Maine</u></a>         | <a href="#"><u>New York</u></a>       | <a href="#"><u>Vermont</u></a>        |
| <a href="#"><u>Connecticut</u></a> | <a href="#"><u>Maryland</u></a>      | <a href="#"><u>North Carolina</u></a> | <a href="#"><u>Virginia</u></a>       |
| <a href="#"><u>Delaware</u></a>    | <a href="#"><u>Massachusetts</u></a> | <a href="#"><u>North Dakota</u></a>   | <a href="#"><u>Washington</u></a>     |
| <a href="#"><u>Florida</u></a>     | <a href="#"><u>Michigan</u></a>      | <a href="#"><u>Ohio</u></a>           | <a href="#"><u>West Virginia</u></a>  |
| <a href="#"><u>Georgia</u></a>     | <a href="#"><u>Minnesota</u></a>     | <a href="#"><u>Oklahoma</u></a>       | <a href="#"><u>Wisconsin</u></a>      |
| <a href="#"><u>Hawaii</u></a>      | <a href="#"><u>Mississippi</u></a>   | <a href="#"><u>Oregon</u></a>         | <a href="#"><u>Wyoming</u></a>        |
| <a href="#"><u>Idaho</u></a>       | <a href="#"><u>Missouri</u></a>      | <a href="#"><u>Pennsylvania</u></a>   |                                       |
| <a href="#"><u>Illinois</u></a>    | <a href="#"><u>Montana</u></a>       | <a href="#"><u>Rhode Island</u></a>   |                                       |



Cancer is a complicated disease that requires comprehensive treatment.

The proper treatment of cancer requires dedicated professionals who can administer proven and innovative treatments. Since cancer treatment can be long, difficult and expensive, support services are necessary for patients and their families. Research is also important so that new cancer treatments and vaccines can be developed to help treat cancer more effectively in the future. Some institutions focus on treatment, support or research. However, many institutions focus on all three elements of cancer care. All of these institutions, whether they are comprehensive or complimentary to other institutions, have an important part to play in the way cancer, and most importantly, cancer patients and their families are treated in the United States. The list provided gives examples of some quality cancer institutions in every state of this country.

## BREAST CANCER GROUPS

### ALABAMA

#### Breast Cancer Research Foundation of Alabama *(Research Fundraising)*

---

Box 531225 Birmingham 35253

PHONE: 205.871.4653

ONLINE: <http://www.bcrfa.org/>

EMAIL: [Jennifer.Galbreath@ccc.uab.edu](mailto:Jennifer.Galbreath@ccc.uab.edu)

#### Clearview Cancer Institute *(Treatment)*

---

3601 CCI Drive Huntsville, AL 35805

PHONE: 1-888-374-1015

ONLINE: <http://www.ccihsv.com>

EMAIL: NONE LISTED



## ALASKA

### Alaska Regional Hospital (Treatment)

2801 DeBarr Road Anchorage, AK 99508

PHONE: (907) 276-1131

ONLINE: <http://www.alaskaregional.com/>

EMAIL: <http://www.alaskaregional.com/CustomPage.asp?guidCustomContentID=B10D90C2-9731-11D4-81F3-00508B1249D5>

### Providence Health Services (Treatment)

3200 Providence Drive, Anchorage, 99508

PHONE: (907) 261-3186

ONLINE: <http://www.providence.org/alaska/pamc/cancer/default.htm>

EMAIL: VIA WEBSITE

## ARIZONA

### Arizona Cancer Control Program (Research)

150 North 18th Avenue Phoenix 85007

PHONE: (602) 542-1000

ONLINE: <http://www.azcancercontrol.gov/>

EMAIL: [webmaster@azdhs.gov](mailto:webmaster@azdhs.gov)

### Breast Center of Southern Arizona (Treatment)

5230 East Farness Drive • Suite 104 • Tucson, AZ 85712

PHONE: 520-319-6686

ONLINE: <http://www.breastcentersaz.com/>

EMAIL: NONE LISTED

## ARKANSAS

### NARTI (Treatment)

5835 W. Sunset Avenue Springdale, Arkansas 72762

PHONE: 479-361-5847

ONLINE: <http://www.narti.org>

EMAIL: [brian.holt@narti.org](mailto:brian.holt@narti.org)

### The Breast Center of Northwest Arkansas (Resource)

55 West Sunbridge | Fayetteville, Arkansas | 479.442.6266

PHONE: 479.442.6266

ONLINE: <http://www.breastcenternwa.com/resource/resource.html>

EMAIL: NONE LISTED



## CALIFORNIA

### Radiation Medical Group *(Treatment)*

---

4025 Camino del Rio South, Suite 101 San Diego, CA 92108-410

PHONE: 619-220-4100

ONLINE: <http://www.rmgmed.com/about.htm>

EMAIL: [webmaster@rmgmed.com](mailto:webmaster@rmgmed.com)

### Women's Cancer Resource of Oakland *(Support Group)*

---

5741 Telegraph Avenue Oakland, CA94609

PHONE: 510.420.7900

ONLINE: <http://www.wcrc.org/>

EMAIL: [wcrc@wcrc.org](mailto:wcrc@wcrc.org)

## COLORADO

### Rocky Mountain Cancer Centers *(Treatment and Diagnosis)*

---

7951 E. Maplewood Avenue, Suite 300 Greenwood Village, CO 80111

PHONE: 1-888-259-7622

ONLINE: <http://www.rockymountaincancercenters.com>

EMAIL: [http://www.rockymountaincancercenters.com/contact\\_request\\_tpl.cfm?categoryid=5&pagename=39](http://www.rockymountaincancercenters.com/contact_request_tpl.cfm?categoryid=5&pagename=39)

### Shaw Regonal Cancer Center *(Treatment and Diagnosis)*

---

322 Beard Creek Road PO Box 2559 Edwards, Colorado 81632

PHONE: 970-569-7690

ONLINE: <http://www.shawcancercenter.com/Shaw/treatments/breast-imaging-center.aspx>

EMAIL: <http://www.shawcancercenter.com/Shaw/contact.aspx>

## CONNETICUT

### CT Breast Health Initiative *(Research)*

---

185 Main Street, New Britain, CT 06501

PHONE: 860-827-7103

ONLINE: <http://www.ctbhi.org/>

EMAIL: [info@ctbhi.org](mailto:info@ctbhi.org)

### CT Greenwich Hospital *(Treatment)*

---

5 Perryridge Road, Greenwich, CT 06830

PHONE: (203) 863-3000

ONLINE: [http://www.greenhosp.org/medicalservices\\_cancer-types-breast.asp](http://www.greenhosp.org/medicalservices_cancer-types-breast.asp)

EMAIL: [http://www.greenhosp.org/contact\\_us.asp](http://www.greenhosp.org/contact_us.asp)



## DELAWARE

### DE Breast Cancer Coalition (*Support Group*)

---

111 W. 11th St., Suite 3 Wilmington 19801

PHONE: 1-888-672-9647

ONLINE: [http://www.debreastcancer.org/survive\\_frame.htm](http://www.debreastcancer.org/survive_frame.htm)

EMAIL: [dbcc@debreastcancer.org](mailto:dbcc@debreastcancer.org)

### Society Interventional Radiology (*Treatment - Non-Surgical*)

---

Dover, DE - Kent General Hospital

PHONE: 800-488-7284

ONLINE: <http://www.sirweb.org/patients/breast-cancer/>

EMAIL: NONE LISTED

## FLORIDA

### FL Breast Cancer Coalition (*Support Group*)

---

1250 E Hallandale Beach Suite 501 Hallandale 33009

PHONE: 877.644.FBCC

ONLINE: <http://www.fbccrf.org/>

EMAIL: [assistant@fbccrf.org](mailto:assistant@fbccrf.org)

### Facing Our Risk of Cancer Empowered (*Support Group*)

---

16057 Tampa Palms Blvd. W, PMB #373 Tampa,

PHONE: 866-824-RISK

ONLINE: [www.facingourrisk.org](http://www.facingourrisk.org)

EMAIL: [cherine@facingourrisk.org](mailto:cherine@facingourrisk.org)

## GEORGIA

### Georgia Breast Cancer Coalition Fund (*Resource*)

---

12195 Highway 92, Suite 114-340 Woodstock, GA 30188

PHONE: 404-633-6499

ONLINE: <http://gabcc.org/>

EMAIL: [Contact@gabcc.org](mailto:Contact@gabcc.org)

### Georgia Cancer Specialists (*Research and Treatment*)

---

1835 Savoy Drive, Suite 300 Atlanta 30341

PHONE: (770) 496-9400

ONLINE: <http://www.gacancer.com/research/index.html>

EMAIL: <http://www.gacancer.com/about-gcs/contact-gcs/index.html>



## HAWAII

### Queens Medical Center *(Treatment and Support)*

---

1301 Punchbowl Street Honolulu, HI 96813

PHONE: 808.547.4726

ONLINE: <http://www.queens.org/>

EMAIL: [email@queens.org](mailto:email@queens.org)

### Susan G. Komen for the Cure *(Support Group)*

---

P.O. Box 23204 Honolulu, 96823

PHONE: 808-754-1817

ONLINE: <http://www.komenhawaii.org/about.htm>

EMAIL: [komen@komenhawaii.org](mailto:komen@komenhawaii.org)

## IDAHO

### Breast Friends of Idaho *(Support Group)*

---

Magic Valley Regional Medical Center P.O. Box 409,  
Twin Falls, Idaho 83303

PHONE: (208) 732-3242

ONLINE: <http://www.breastfriends.com/resources/idaho/>

EMAIL: [mail@breastfriends.com](mailto:mail@breastfriends.com)

### Planned Parenthood of Idaho *(Screening)*

---

1109 Main St., Ste. 500 Boise, ID 83702

PHONE: 208-376-9300

ONLINE: <http://www.plannedparenthood.org/idaho/breast-cancer-screening-18817.htm>

EMAIL: [info@ppidaho.org](mailto:info@ppidaho.org)

## ILLINOIS

### Breast Cancer Network of Strength *(Support Group)*

---

West Suburban Hospital, Center for Breast Care, 420  
Williams St., Suite 1000, 1st Floor, River Forest

PHONE: 877-737-4636

ONLINE: <http://www.networkofstrength.org/illinois/>

EMAIL: [illinois@networkofstrength.org](mailto:illinois@networkofstrength.org)

### IL Breast and Cervical Cancer Association *(Research)*

---

535 West Jefferson Street, Springfield, 62761

PHONE: 1-888-522-1282

ONLINE: <http://www.cancerscreening.illinois.gov/>

EMAIL: NONE LISTED



## INDIANA

### Hope Cancer Resource Center *(Support Group)*

---

3801 Bellemeade Ave., Suite 120 Evansville, IN

PHONE: (812) 485-5725

ONLINE: <http://www.stmarys.org/1336.cfm>

EMAIL: <http://www.stmarys.org/body.cfm?id=529>

### Melvin and Bren Simon Cancer Center *(Treatment and Research)*

---

535 Barnhill Drive, Indianapolis, IN 46202

PHONE: (317) 274-5112

ONLINE: <http://cancer.iu.edu/programs/breast/>

EMAIL: [maschug@iupui.edu](mailto:maschug@iupui.edu)

## IOWA

### Iowa Breast Cancer Education *(Research and Education)*

---

Campus Street and Jennings Drive, Cedar Falls, IA

PHONE: 319-266-0194

ONLINE: [http://www.iowabreastcancer.org/IBCE\\_new/index.html](http://www.iowabreastcancer.org/IBCE_new/index.html)

EMAIL: [christine.carpenter@cfu.net](mailto:christine.carpenter@cfu.net)

### Mercy Hospital Iowa City *(Treatment)*

---

500 East Market Street Iowa City, IA 5224

PHONE: 319-358-2767

ONLINE: [http://www.mercyic.org/support/support\\_groups.cfm](http://www.mercyic.org/support/support_groups.cfm)

EMAIL: [denise.maier@mercyic.org](mailto:denise.maier@mercyic.org)

## KANSAS

### Kansas City Cancer Center *(Treatment)*

---

8929 Parallel Parkway Kansas City, KS 66112

PHONE: (913) 596-5010

ONLINE: <http://www.kccancercenters.com/>

EMAIL: [kcccpacs@usoncology.com](mailto:kcccpacs@usoncology.com)

### University of Kansas Hospital *(Treatment and Prevention)*

---

3901 Rainbow Boulevard Kansas City, KS 66160-7220

PHONE: 913-588-1227

ONLINE: <http://www.kumed.com/default.aspx?id=2486>

EMAIL: NONE LISTED



## KENTUCKY

### Breast Friends of Kentucky *(Support Group)*

---

Central Baptist Hospital Building E Suite 703, Lexington, KY

PHONE: 859-260-4257.

ONLINE: [www.breastfriends.com/resources/kentucky/](http://www.breastfriends.com/resources/kentucky/)

EMAIL: [mail@breastfriends.com](mailto:mail@breastfriends.com)

### Kentucky Breast Cancer Coalition *(Treatment)*

---

275 East Main Street, Frankfort, KY 40621

PHONE: (502)-564-2154

ONLINE: <http://www.kybcc.org/frame.html>

EMAIL: [webmaster@kybcc.org](mailto:webmaster@kybcc.org)

## LOUISIANA

### LA Breast and Cervical Health Assoc *(Prevention)*

---

1615 Poydras St Ste 1400, New Orleans 70112

PHONE: 1.888.599.1073

ONLINE: <http://labchp.lsuhs.edu/>

EMAIL: [redwa1@lsuhsc.edu](mailto:redwa1@lsuhsc.edu)

### LSU Hospital *(Treatment)*

---

P.O. Box 91308 Baton Rouge, LA 70821-1308

PHONE: 866-431-4571

ONLINE: <http://www.lsuhs.org/>

EMAIL: [lsuhospitals@lsuhsc.edu](mailto:lsuhospitals@lsuhsc.edu)

## MAINE

### Maine Breast Cancer Coalition *(Support Group)*

---

499 Broadway, PMB 362, Bangor, 04401

PHONE: 1-800-928-2644

ONLINE: <http://www.mainebreastcancer.org/>

EMAIL: [czh1@roadrunner.com](mailto:czh1@roadrunner.com)

### Maine Center for Breast Cancer Treatment *(Treatment)*

---

100 Campus Drive, Suite 108 Scarborough, Maine 04074-9308

PHONE: (207)885-7600

ONLINE: <http://www.mccm.org/cancernews.aspx?section=cancernews&display=summary&cid=16,17,18,19,20,21,22,24>

EMAIL: [webmaster@mccm.org](mailto:webmaster@mccm.org)



## MARYLAND

### Harbor Hospital (Treatment)

3001 S. Hanover Street Baltimore, MD 21225

PHONE: 410-350-3200

ONLINE: <http://www.harborhospital.org/15719.cfm>

EMAIL: <http://harborhospital.org/form.cfm?id=555830>

### Komen for the Cure Maryland (Support)

200 East Joppa Rd, Suite 407, Towson, MD 21286

PHONE: 1-877-465-6636

ONLINE: <http://www.komenmd.org/site/c.ddJIKPNnFkG/b.2530875/>

EMAIL: [info@komenmd.org](mailto:info@komenmd.org)

## MASSACHUSETTS

### Massachusetts Breast Cancer Coalition (Support Group)

1419 Hancock Street, Suite 202, Quincy, MA 02169

PHONE: (617) 376-6222

ONLINE: <http://www.mbcc.org>

EMAIL: [info@mbcc.org](mailto:info@mbcc.org)

### Massachusetts General Hospital Cancer Center (Treatment)

55 Fruit Street, YAW 7 Boston, MA 02114

PHONE: 617-724-4800

ONLINE: [http://massgeneral.org/cancer/care/adult/breast/avon/team\\_clinician.asp?id=239](http://massgeneral.org/cancer/care/adult/breast/avon/team_clinician.asp?id=239)

EMAIL: <http://massgeneral.org/cancer/contact/inquiry.asp>

## MICHIGAN

### Gilda's Club (Support Group)

3517 Rochester Road, Royal Oak, MI 48073

PHONE: 248-557-0800

ONLINE: [www.gildasclubdetroit.org](http://www.gildasclubdetroit.org)

EMAIL: [info@gildasclub.org](mailto:info@gildasclub.org)

### MI Breast and Cervical Cancer Control Program (Treatment and Diagnosis)

201 Townsend Street Lansing, 48913

PHONE: 517-373-3740

ONLINE: <http://www.michigan.gov/mdch/0,1607,7-132-2940-2955-13487--,00.html>

EMAIL: [ellsworthjef@michigan.gov](mailto:ellsworthjef@michigan.gov)



## MINNESOTA

### Masonic Cancer Center (Resource)

2500 University Ave., S.E., Minneapolis, MN 55414

PHONE: 612-625-5000

ONLINE: <http://www.cancer.umn.edu/cancerinfo/breast.html>

EMAIL: <http://www1.umn.edu/twincities/contact/feedback.html>

### Mayo Clinic Minnesota (Treatment)

200 First St. S.W. Rochester, MN 55905

PHONE: (507) 284-2511

ONLINE: <http://www.mayoclinic.org/breast-cancer/rsttreatment.html>

EMAIL: <https://forms.mayoforms.org/forms/up/mc506400.cfm>

## MISSISSIPPI

### Medical Community Oxford (Resource)

299 West Jackson Avenue PO Box 147 Oxford, MS 38655

PHONE: 662-234-4651

ONLINE: <http://www.oxfordms.com/medical.html>

EMAIL: [info@oxfordms.com](mailto:info@oxfordms.com)

### Miss Breast and Cervical Cancer Center (Treatment and Detection)

570 East Woodrow Wilson PO Box 1700 Jackson, MS 39215-1700

PHONE: None Listed

ONLINE: [http://www.adoptionsservices.org/breast\\_cancer\\_detection/breast\\_cancer\\_detection\\_mississippi.htm](http://www.adoptionsservices.org/breast_cancer_detection/breast_cancer_detection_mississippi.htm)

EMAIL: [vince@adoptionsservices.org](mailto:vince@adoptionsservices.org)

## MISSOURI

### BC Early Detection Laboratory (Treatment and Detection)

115 Business Loop 70 WestColumbia, MO 65203

PHONE: (573) 882-8454

ONLINE: <http://www.surgery.missouri.edu/departments/breastcancerlab/team.htm>

EMAIL: [email\\_sautere@health.missouri.edu](mailto:email_sautere@health.missouri.edu)

### Siteman Cancer Center Breast Cancer Support (Support Group)

Barnard Health and Cancer Information Center, Center for Advanced Medicine, 4921 Parkview Ave., St. Louis, MO 63110

PHONE: 314-747-1236

ONLINE: <http://www.siteman.wustl.edu/internal.aspx?id=397>

EMAIL: <http://www.siteman.wustl.edu/formblock.aspx?id=970&ekfrm=980>



## MONTANA

### Montana Breast Cancer Center *(Informational Resource)*

---

500 West Broadway in Missoula, Montana

PHONE: 406-728-2539

ONLINE: <http://www.mtcancer.com/Content.aspx?Section=typesofcancer&DocumentID=628>

EMAIL: NONE LISTED

### Montana Cancer Institute Foundation *(Resource and Research)*

---

MCIF 500 W. Broadway Missoula, MT 59802

PHONE: 406-329-5663

ONLINE: <http://www.montanacancerinstitutefoundation.org/>

EMAIL: [laukes@saintpatrick.org](mailto:laukes@saintpatrick.org)

## NEBRASKA

### Nebraska Breast Cancer Center *(Informational Resource)*

---

42nd and Dewey Omaha, NE 68198

PHONE: 1-800-922-0000

ONLINE: <http://www.nhsnet.org/services/cancer/centers/breastCancer.aspx>

EMAIL: <http://www.nhsnet.org/contact.aspx>

### UNMC Eppley Cancer Center *(Treatment)*

---

600 South 42nd Street Omaha, NE 68198-6805

PHONE: (402) 559-4238

ONLINE: <http://www.unmc.edu/cancercenter/>

EMAIL: [ngillespie@unmc.edu](mailto:ngillespie@unmc.edu)

## NEVADA

### Nevada Cancer Institute *(Treatment)*

---

10441 West Twain Avenue Las Vegas, NV 89135

PHONE: (702) 822-LIFE

ONLINE: <http://nevadacancerinstitute.org/default.aspx>

EMAIL: [lpaz@nvcancer.org](mailto:lpaz@nvcancer.org)

### Summerline Hospital Cancer Center *(Treatment)*

---

657 Town Center Drive Las Vegas, NV 89144

PHONE: (702) 233-7000

ONLINE: <https://www.summerlinhospital.com>

EMAIL: <https://www.summerlinhospital.com/index.php?PageID=398>



## NEW HAMPSHIRE

### Exeter Hospital *(Treatment)*

---

5 Alumni Drive Exeter, New Hampshire 03833

PHONE: (603) 778-7311

ONLINE: <http://www.exeterhospital.com>

EMAIL: NONE LISTED

### NH Breast Cancer Coalition *(Support Group)*

---

18 Belle Lane, Lee, NH 03861-6438

PHONE: 603.659.3482

ONLINE: <http://nhbcc.org/>

EMAIL: [info@nhbcc.org](mailto:info@nhbcc.org)

## NEW JERSEY

### Cooper University Hospital *(Treatment)*

---

One Cooper Plaza Camden, New Jersey 08103

PHONE: (856) 342-2000

ONLINE: <http://www.cooperhealth.org>

EMAIL: [http://www.cooperhealth.org/inTouch/FormGenerator.aspx?form\\_id=8&site\\_id=1&page\\_id=38](http://www.cooperhealth.org/inTouch/FormGenerator.aspx?form_id=8&site_id=1&page_id=38)

### Health Care Choice NJ Breast Cancer Sugery *(Support Group)*

---

Box 21039 New York, NY 10023

PHONE: None Listed

ONLINE: [http://www.healthcarechoices.org/breastcancersurgery\\_nj/breastsurnj.htm](http://www.healthcarechoices.org/breastcancersurgery_nj/breastsurnj.htm)

EMAIL: [info@healthcarechoices.org](mailto:info@healthcarechoices.org)

## NEW MEXICO

### M. D. Anderson Cancer Center Radiation Treatment Center *(Radiation Treatment)*

---

8300 Constitution Ave. NE, Bldg. D Albuquerque, NM 87110

PHONE: 505-559-6100

ONLINE: <http://phs.org/phs/cancercenter/radiation/index.htm>

EMAIL: <http://phs.org/phs/about/contact/feedback/index.htm>

### NMDH Cancer Prevention *(Treatment and Prevention)*

---

5301 Central Ave. NE, Suite 800, Albuquerque, New Mexico 87108

PHONE: None Listed

ONLINE: <http://www.cancernm.org/>

EMAIL: <http://www.cancernm.org/contact/>



## NEW YORK

### Avon Walk for Breast Cancer *(Support Group)*

---

1345 Avenue of the Americas, 4th Floor, New York, NY 10105

PHONE: 1-888-540-9255

ONLINE: [http://walk.avonfoundation.org/site/PageServer?pagename=nwy\\_home\\_2k8](http://walk.avonfoundation.org/site/PageServer?pagename=nwy_home_2k8)

EMAIL: [info@avonwalk.org](mailto:info@avonwalk.org)

### The Breast Cancer Research Foundation *(Research Foundation)*

---

60 East 56th Street 8th floor New York, N.Y. 10022

PHONE: 1-866-FIND-A-CURE

ONLINE: <http://www.bcrfcure.org>

EMAIL: [bcrf@bcrfcure.org](mailto:bcrf@bcrfcure.org)

## NORTH CAROLINA

### Cancer Centers of North Carolina *(Support Group and Treatment)*

---

4101 Macon Pond Road Raleigh, NC 27607

PHONE: 919.781.7070

ONLINE: <http://www.cancercentersofnc.com/cancer/breast.html>

EMAIL: NONE LISTED

### North Carolina Breast Cancer Resource Directory *(Resource Directory)*

---

Post Office Box 1188, Greenville, NC 27835

PHONE: (919) 966-9834

ONLINE: <http://bcresourcedirectory.org/>

EMAIL: [bcresources@med.unc.edu](mailto:bcresources@med.unc.edu)

## NORTH DAKOTA

### Altru Cancer Center *(Treatment)*

---

1200 South Columbia Road P.O. Box 6002 Grand Forks, ND 58206-6002

PHONE: (701) 780-5860

ONLINE: <http://www.altru.org/body.cfm?id=123>

EMAIL: [CONTACTUS@altru.org](mailto:CONTACTUS@altru.org)

### Cancer Center of North Dakota *(Treatment and Diagnosis)*

---

1451 44th Avenue South Unit E Grand Forks, ND 58201

PHONE: 1-888-785-CCND

ONLINE: <http://cancercenternd.com/>

EMAIL: [ruhland@cancercenternd.com](mailto:ruhland@cancercenternd.com)



## OHIO

### Northern Ohio Breast Cancer Coalition *(Support Group)*

---

8921 Brecksville Rd. Brecksville, OH 44141

PHONE: 440-717-9912

ONLINE: <http://www.nobcc.org/index.html>

EMAIL: [info@nobcc.org](mailto:info@nobcc.org)

### Ohio State University Comprehensive Cancer Center – James Cancer Hospital and Solove Research Institute (OSUCCC - James) *(Treatment)*

---

300 West 10th Avenue, Suite 519 Columbus, Ohio, 43210

PHONE: (614) 293-5066

ONLINE: <http://www.jamesline.com/cancertypes/breast/>

EMAIL: [cancerinfo@jamesline.com](mailto:cancerinfo@jamesline.com)

## OKLAHOMA

### Breast Imaging of Oklahoma *(Treatment)*

---

2601 Kelley Pointe Parkway, Edmond, OK

PHONE: (405) 844-2601 ext. 1031

ONLINE: <http://www.breastimagingofoklahoma.com/support.htm>

EMAIL: [mcrafft@breastok.com](mailto:mcrafft@breastok.com)

### Integris Breast Cancer Center *(Breast Cancer Treatment, Screening and Diagnosis)*

---

3525 N.W. 56th Street One Corporate Plaza Ste. C-100  
Oklahoma City, 73112

PHONE: (405) 945-0045

ONLINE: <http://www.integrish.com/INTEGRIS/en-US/Specialties/CBC/>

EMAIL: <https://www.integrish.com/INTEGRIS/en-US/AboutUs/ContactUs.htm>

## OREGON

### Northwest Cancer Specialists *(Breast Cancer Treatment, Screening and Diagnosis)*

---

2311 NW Northrup, Suite 105 Portland, OR 97210

PHONE: 503.274.4885

ONLINE: [http://www.nwcancer.com/Breast\\_Cancer.php](http://www.nwcancer.com/Breast_Cancer.php)

EMAIL: [http://www.nwcancer.com/Contact\\_Us.php](http://www.nwcancer.com/Contact_Us.php)

### Willamette Valley Cancer Center *(Treatment and Support)*

---

520 Country Club Road Eugene, Oregon 97401

PHONE: 541-683-5001

ONLINE: [http://www.wvcancercenter.com/home/wv1/contact\\_main.html](http://www.wvcancercenter.com/home/wv1/contact_main.html)

EMAIL: NONE LISTED



## PENNSYLVANIA

### Dale & Frances Hughes Cancer Center *(Treatment)*

206 East Brown Street, East Stroudsburg, PA 18301

PHONE: (570) 476-3367

ONLINE: <http://www.hughescancercenter.org/section.cfm?id=134>

EMAIL: [feedback@pmchealthsystem.org](mailto:feedback@pmchealthsystem.org)

### PA Breast Cancer Coalition *(Support Group)*

Trout Run Business Center 344 North Reading Road  
Ephrata, PA 17522

PHONE: 1-800-377-8828

ONLINE: <http://www.pabreastcancer.org/default.html>

EMAIL: [kim@pabreastcancer.org](mailto:kim@pabreastcancer.org)

## RHODE ISLAND

### Gloria Gemma Breast Cancer Resource *(Support Group)*

One Wellington Rd. Lincoln, RI 02865

PHONE: 401-861-HERO

ONLINE: <http://gloriagemma.org/>

EMAIL: [info@gloriagemma.org](mailto:info@gloriagemma.org)

### Rhode Island Cancer Council *(Resource)*

249 Roosevelt Avenue, Suite 201, Pawtucket, RI 02860

PHONE: 1-866-879-4100

ONLINE: <http://www.ricancercouncil.org/cancer-info/breast-cancer.php>

EMAIL: [Tel@ricancercouncil.org](mailto:Tel@ricancercouncil.org)

## SOUTH CAROLINA

### Hollings Cancer Center's (HCC) *(Treatment)*

86 Jonathan Lucas Street Charleston, SC 29425

PHONE: (843)-792-0700

ONLINE: <http://hcc.musc.edu/breastcancer/index.htm>

EMAIL: [http://hcc.musc.edu/se/util/passthru.cfm?ModuleToCall=/mod/modules/semod\\_sendtoafriend/mod\\_email.cfm&title=e-mail&thisUrl=http%3A%2F%2Fhcc.musc.edu%2Fbreastcancer%2Findex.htm&isActive=1&subject=link%20to%20Hollings%20Cancer%20Center%20Web%20site&content=%0A%0A](http://hcc.musc.edu/se/util/passthru.cfm?ModuleToCall=/mod/modules/semod_sendtoafriend/mod_email.cfm&title=e-mail&thisUrl=http%3A%2F%2Fhcc.musc.edu%2Fbreastcancer%2Findex.htm&isActive=1&subject=link%20to%20Hollings%20Cancer%20Center%20Web%20site&content=%0A%0A)

### Palmetto Health Breast Center *(Radiation Treatment)*

1501 Sumter Street Columbia, SC 29202

PHONE: (803) 296-8888

ONLINE: <http://www.palmettohealth.org/body.cfm?id=185>

EMAIL: [BEL.PROJECT@palmettohealth.org](mailto:BEL.PROJECT@palmettohealth.org)



## SOUTH DAKOTA

### Avera Cancer Institute (Radiation Treatment)

1001 East 21 St Sioux Falls, SD 57105

PHONE: 605-322-3000

ONLINE: <http://www.avera.org/amck/cancer/index.aspx>

EMAIL: [Aciqueries@mckennan.org](mailto:Aciqueries@mckennan.org)

### Sanford USD Medical Center (Treatment and Diagnosis)

1305 West 18th Street Sioux Falls, SD 57117-5039

PHONE: 605-333-1000

ONLINE: <http://www.sanfordhealth.org/ContactUs/index.cfm>

EMAIL: [info@sanfordhealth.org](mailto:info@sanfordhealth.org)

## TENNESSEE

### TN Breast Cancer Coalition (Support Group)

P.O. Box 158014 Nashville, Tennessee 37215-8014

PHONE: (615) 377-8777

ONLINE: <http://www.tbcc.org/>

EMAIL: NONE LISTED

### TN Breast Center

1111 East Lamar Alexander Parkway

PHONE: 865-984-9282

ONLINE: <http://www.tennesseebreastcenter.com/>

EMAIL: [tlcbradley@charterbn.com](mailto:tlcbradley@charterbn.com)

## TEXAS

### TX Cancer Clinic (Treatment)

9102 Floyd Curl San Antonio, Texas 78240

PHONE: (210) 247-0888

ONLINE: <http://texasbreastcancer.com/index/index.cfm>

EMAIL: [swest@texascancerclinic.com](mailto:swest@texascancerclinic.com)

### The Don & Sybil Harrington Cancer Center (Treatment)

1500 Wallace Boulevard Amarillo, Texas 79106

PHONE: 806-359-4673

ONLINE: <https://secure.harringtoncc.org/index.php?id=167>

EMAIL: <https://secure.harringtoncc.org/index.php?id=342>



## UTAH

### Huntsman Cancer Institute *(Treatment)*

---

1950 Circle of Hope Salt Lake City, UT 84112

PHONE: (801) 585-0100

ONLINE: <http://www.huntsmancancer.org/>

EMAIL: [public.affairs@hci.utah.edu](mailto:public.affairs@hci.utah.edu)

### Utah Cancer Action Network *(Support Group)*

---

288 North 1460 West Salt Lake City

PHONE: 1-888-222-2542

ONLINE: <http://health.utah.gov/ucan/cancer/Sitespecific/breast.htm>

EMAIL: [hlthquestions@utah.gov](mailto:hlthquestions@utah.gov)

## VERMONT

### Vermont Breast Cancer Conference *(Support Group)*

---

University of Vermont, E-213 Given Building, 89  
Beaumont Avenue, Burlington, VT 05405

PHONE: 802-656-2292

ONLINE: <http://www.vtbreastcancerconference.org/>

EMAIL: [webmaster@vermontcancer.org](mailto:webmaster@vermontcancer.org)

### Vermont Cancer Survivor Network *(Support Group)*

---

P.O. Box 42 Montpelier, VT 05601

PHONE: 800-652-5064

ONLINE: <http://vcsn.net/wordpress>

EMAIL: [info@vcsn.net](mailto:info@vcsn.net)

## VIRGINIA

### Virginia Breast Cancer Foundation *(Support and Fundraising)*

---

5004 Monument Ave Suite 102 Richmond, VA 23230

PHONE: 804-285-1200

ONLINE: <http://www.vbcf.org/>

EMAIL: [angela@vbcf.org](mailto:angela@vbcf.org)

### Virginia Cancer Institute *(Treatment)*

---

14051 St. Francis Boulevard Midlothian, VA 23114

PHONE: (804) 378-0394

ONLINE: <http://www.vacancer.com/>

EMAIL: <http://www.vacancer.com/EmailPage.aspx?Section=contact&DocumentID=35154>



## WASHINGTON

### Breast Cancer Resource Center of Tacoma *(Education, outreach, fundraising, activism)*

---

3502 South 12th Street • Tacoma, WA 98405

PHONE: 253-752-4222

ONLINE: <http://www.bcrcwa.org/>

EMAIL: [info@bcrcwa.org](mailto:info@bcrcwa.org)

### Seattle Cancer Care Alliance *(Treatment)*

---

825 Eastlake Ave. E, P.O. Box 19023, Seattle, WA 98109-1023

PHONE: (206) 288-SCCA

ONLINE: <http://www.seattlecca.org/diseases/breast-cancer-overview.cfm>

EMAIL: [contactus@seattlecca.org](mailto:contactus@seattlecca.org)

## WEST VIRGINIA

### West Virginia Comprehensive Cancer Program *(Treatment)*

---

350 Capitol Street • Room 206 • Charleston, WV 25301-3715

PHONE: (304) 558-0644

ONLINE: <http://www.wvhpcd.org/Default.aspx?alias=www.wvhpcd.org/ccp>

EMAIL: [bumpus@etsu.edu](mailto:bumpus@etsu.edu)

### West Virginia University The Breast & Cervical Cancer Screening Program *(Treatment)*

---

MBRCC Cancer Center | P.O. Box 9300 | Morgantown, WV 26506-9300

PHONE: 304.293.2370

ONLINE: <http://www.hsc.wvu.edu/mbrcc/bccsp/>

EMAIL: <http://www.hsc.wvu.edu/mbrcc/webmaster.asp>

## WISCONSIN

### Wisconsin Breast Cancer Coalition *(Support Group)*

---

P.O. Box 170031 Milwaukee, WI 53217-0031

PHONE: 414-963-2103

ONLINE: <http://www.standupandspeakout.org/>

EMAIL: [wbcc@standupandspeakout.org](mailto:wbcc@standupandspeakout.org)

### Wisconsin Breast Cancer Showhouse *(Support Group)*

---

P.O. Box 170588 Milwaukee, WI 53217

PHONE: (262) 241-5244

ONLINE: <http://www.breastcancershowhouse.org/contact-us.html>

EMAIL: [showhouse@mcw.edu](mailto:showhouse@mcw.edu)



## WYOMING

### Big Horn Basin Radiation Oncology Center *(Radiation Treatment)*

---

1025 Ninth Street Cody, WY 82414

PHONE: 1-877-587-2955

ONLINE: <http://bhbasincancercenter.org/>

EMAIL: NONE LISTED

### Wyoming Comprehensive Cancer Control Consortium *(Support Group)*

---

No Address Provided

PHONE: 307.777.8609

ONLINE: <http://www.fightcancerwy.com/about.asp>

EMAIL: [info@fightcancerwy.com](mailto:info@fightcancerwy.com)

